



# Pipeline Management

## Sentient Portfolio Program Management

### What does it do?

Sentient PPM **Pipeline Management** gives you the tools to gain visibility and control of your pipeline. Full, portfolio-wide visibility of your delivery processes allows you to identify and manage conflicts and bottlenecks. As well as have confidence that your organization is hitting delivery targets.

You create your own set of standardized gate milestones to ensure all projects are adhering to the established delivery processes; this helps you to monitor milestones and dependencies for entire programs of work.

Everyone in your organization has visibility of the next gate milestones and can prioritize efforts to effectively manage timely delivery. Your whole organization can focus their efforts on the important items of work.



### How will it help my organization?

Leaving project deliverables to the last minute puts the entire organization under unnecessary strain. Slipping time frames, escalating costs, and resource pool stresses are all symptoms of poor pipeline visibility.

Managing delivery constraints early in the process puts your whole business on track. Gain control of your delivery process and use visual tools to clearly see exceptions. Easily identify where projects have missed key milestones or have dependencies and take corrective action immediately.

### Organizational Challenges

- ❖ Poor visibility of your program and project pipeline
- ❖ Trouble achieving milestones on time
- ❖ Ineffective gating and control of programs and projects
- ❖ Poor understanding of delivery bottlenecks
- ❖ Ad hoc capture of milestone dependencies

### Key benefits:

**Specific to your organization** – Build your own unique processes; you decide on the gates and milestones to be adhered to.

**Get the real picture** – Gain visibility of key deliverables and, most importantly, when they have been missed.

**Keep everyone aligned** – Everyone in your organization can be given visibility of how key programs and projects are tracking and what they should be working on.

**Process centric** – Your processes evolve with your business; re-assess, refine, and make changes when required.

**Control and understanding** – Centralized project and process information allows you to identify delivery bottlenecks to make informed business decisions.



## How does it work?

Sentient PPM **Pipeline Management** allows you to effectively manage your pipeline of work. By enabling your delivery processes within Sentient PPM you can have the confidence that a minimum level of governance is adhered to.

**1. Build your delivery model** – Define your program and project delivery phases and the gate milestones as “checkpoints” for your delivery framework.

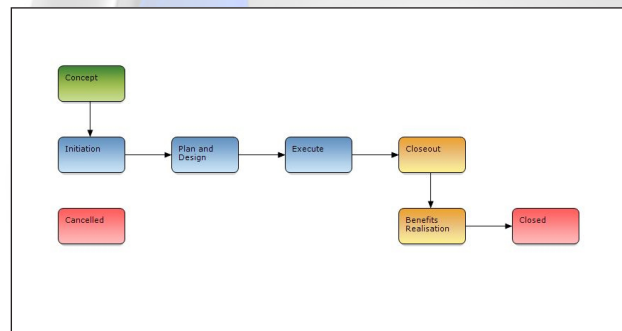
**2. Capture information** – Define, capture and track milestone and dependencies against your projects and programs of work.

**3. Monitor your delivery processes** – Have confidence that you know what is really happening. Top-down visibility means projects simply can't miss key milestones without you knowing about it.

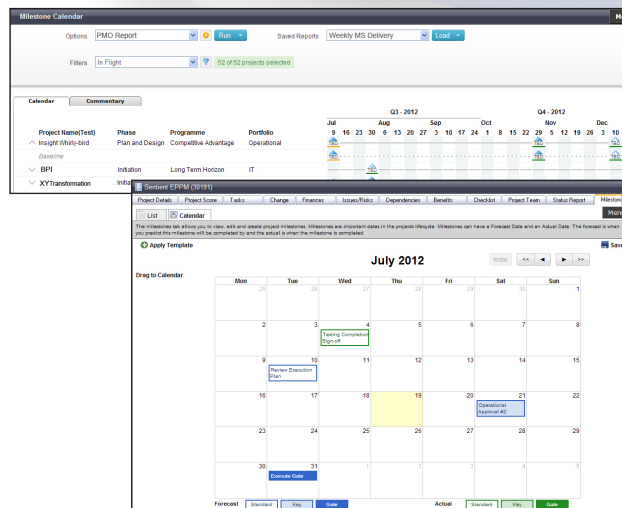
**4. View pipeline of work** – Graphically manage your pipeline of work. Understand and manage delivery bottlenecks then drill down into the project to get the information you need to make effective decisions.

**5. Compare visually** – Use Gantt style charts to visually outline key milestones across your entire organization.

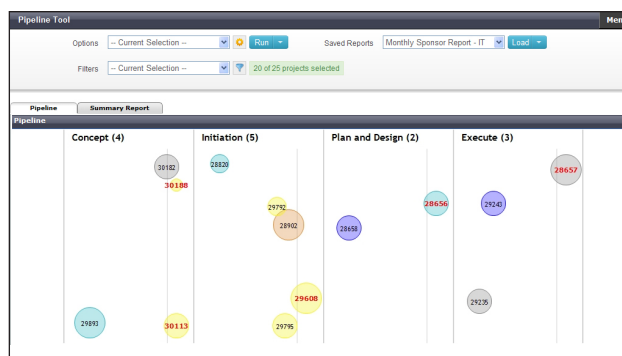
**6. Inform** – Real-time information means key stakeholders are kept fully informed about the progress and overall health of their ‘in flight’ projects - having this information readily available means that decisions will be informed and proactive.



*Configurable program and project delivery lifecycle(s)*



*Track and manage milestones quickly and easily*



*Manage by exception*

**Sentient** is the leading private cloud Enterprise Portfolio Program Management (EPPM) service provider in Australasia and is proud to provide solutions to some of its leading companies.

As a cloud solution Sentient PPM is available anywhere, anytime to anyone with access to the internet. It's fast to deploy, easy to use and requires no infrastructure.

**For an EPPM solution that really delivers outcomes – Sentient Portfolio Program Management**

**Head Office - New Zealand**  
Level 1, 20 Augustus Terrace,  
Parnell, Auckland  
Phone: +64 9 366 0655  
[info@sentientppm.com](mailto:info@sentientppm.com)

**Australian Offices**  
Level 8, 5 Elizabeth Street, Sydney  
Level 13, 50 Market Street, Melbourne  
Phone: +61 2 8006 2334  
[www.sentientppm.com](http://www.sentientppm.com)

